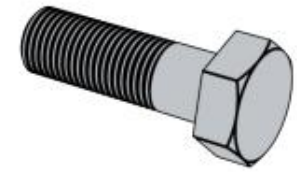


Unit: mm

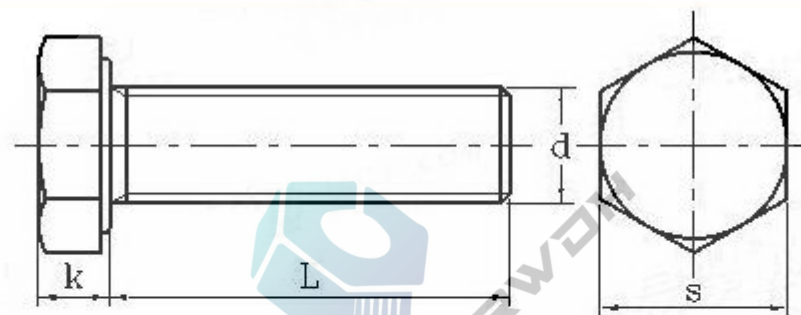


NEWSTARWDH

Unit:inch

d	d _s		s		k		b	
	max	min	max	min	max	min	L ≤ 6	L > 6
1/4	0.26	0.237	0.438	0.425	0.188	0.15	0.75	1
5/16	0.324	0.298	0.5	0.484	0.235	0.195	0.875	1.125
3/8	0.388	0.36	0.562	0.544	0.268	0.226	1	1.25
7/16	0.452	0.421	0.625	0.603	0.316	0.272	1.125	1.375
1/2	0.515	0.482	0.75	0.725	0.364	0.302	1.25	1.5
5/8	0.642	0.605	0.938	0.905	0.444	0.378	1.5	1.75
3/4	0.768	0.729	1.125	1.088	0.524	0.455	1.75	2
7/8	0.895	0.852	1.312	1.269	0.604	0.531	2	2.25
1	1.022	0.976	1.5	1.45	0.7	0.591	2.25	2.5
1-1/8	1.149	1.098	1.688	1.631	0.78	0.658	2.5	2.75
1-1/4	1.277	1.223	1.875	1.812	0.876	0.749	2.75	3
1-3/8	1.404	1.345	2.062	1.994	0.94	0.81	3	3.25
1-1/2	1.531	1.47	2.25	2.175	1.036	0.902	3.25	3.5
1-5/8	1.658	1.591	2.438	2.356	1.116	0.978	3.5	3.75
1-3/4	1.785	1.716	2.625	2.538	1.196	1.054	3.75	4
1-7/8	1.912	1.839	2.812	2.719	1.276	1.13	4	4.25
2	2.039	1.964	3	2.9	1.388	1.175	4.25	4.5
2-1/4	2.305	2.214	3.375	3.262	1.548	1.327	/	5
2-1/2	2.559	2.461	3.75	3.625	1.708	1.479	/	5.5
2-3/4	2.827	2.711	4.125	3.988	1.869	1.632	/	6
3	3.081	2.961	4.5	4.35	2.06	1.815	/	6.5
3-1/4	3.335	3.21	4.875	4.712	2.251	1.936	/	7
3-1/2	3.589	3.461	5.25	5.075	2.38	2.057	/	7.5
3-3/4	3.858	3.726	5.625	5.437	2.572	2.241	/	8
4	4.111	3.975	6	5.8	2.764	2.424	/	8.5

DIN 558



Unit: mm

d	M5	M6	M8	M10	M12	M16	M20	M24	M30	M36
Pitch P	0.8	1	1.25	1.5	1.75	2	2.5	3	3.5	4
k	max	3.88	4.38	5.68	6.85	7.95	10.8	13	16	23.6
	min	3.12	3.62	4.92	5.95	7.05	9.25	12	14	21.5
s	max	8	10	13	17	19	24	30	36	46
	min	7.64	9.64	12.6	16.57	18.5	23.2	29	35	45

Screw Thread d			(M14)	M16	(M18)	M20	(M22)	M24	(M27)	M30	(M33)	M36	(M39)
			2	2	2.5	2.5	2.5	3	3	3.5	3.5	4	4
P			34	38	42	46	50	54	60	66	72	78	84
b			40	44	48	52	56	60	66	72	78	84	90
d_s	max=nominal size		53	57	61	65	69	73	79	85	91	97	103
	Grade A	min	14	16	18	20	22	24	27	30	33	36	39
	Grade B	min	13.73	15.73	17.73	19.67	21.67	23.67	-	-	-	-	-
k	Grade A	min	-	15.57	17.57	19.48	21.48	23.48	26.48	29.48	32.38	35.38	38.38
		max	8.62	9.82	11.28	12.28	13.78	14.78	-	-	-	-	-
	Grade B	min	8.98	10.18	11.72	12.72	14.22	15.22	-	-	-	-	-
		max	-	9.71	11.15	12.15	13.65	14.65	16.65	18.28	20.58	22.08	24.58
max=nominal size			-	10.29	11.85	12.85	14.35	15.35	17.35	19.12	21.42	22.92	25.42
s	Grade A	min	22	24	27	30	32	36	41	46	50	55	60
	Grade B	min	21.67	23.67	26.67	29.67	31.61	35.38	-	-	-	-	-
			-	23.16	26.16	29.16	31	35	40	45	49	53.8	58.8

DIN 931-1 - 1987

DIN ISO 4014 - 2011

Screw Thread d		(M18)	M20	(M22)	M24	(M27)	M30	(M33)	M36	(M39)	M42	(M45)	M48	(M52)
P	Pitch	2.5	2.5	2.5	3	3	3.5	3.5	4	4	4.5	4.5	5	5
	Nominal Size	11.5	12.5	14	15	17	18.7	21	22.5	25	26	28	30	33
k	Grade A min	11.28	12.28	13.78	14.78	/	/	/	/	/	/	/	/	/
	Grade A max	11.72	12.72	14.22	15.22	/	/	/	/	/	/	/	/	/
	Grade B min	11.15	12.15	13.65	14.65	16.65	18.28	20.58	22.08	24.58	25.58	27.58	29.58	32.5
	Grade B max	11.85	12.85	14.35	15.35	17.35	19.12	21.42	22.92	25.42	26.42	28.42	30.42	33.5
s	max=nominal size	27	30	32	36	41	46	50	55	60	65	70	75	80
	Grade A min	26.67	29.67	31.61	35.38	/	/	/	/	/	/	/	/	/
	Grade B min	26.15	29.16	31	35	40	45	49	53.8	58.8	63.1	68.1	73.1	78.1
e	Grade A min	30.14	33.53	35.72	39.98	/	/	/	/	/	/	/	/	/
	Grade B min	29.56	32.95	35.03	39.55	45.2	50.85	55.37	60.79	66.44	71.3	76.95	82.6	88.25
Weight of per 1000 steel products(≈kg)		-	-	-	-	-	-	-	-	-	-	-	-	-

Alternative history

DIN 933 - 1987

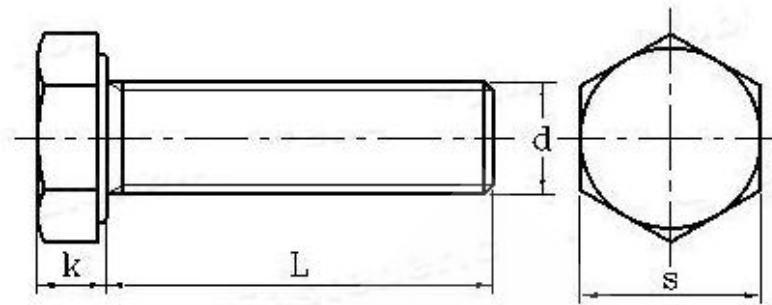
DIN EN ISO 4017 - 2001

DIN EN ISO 4017 - 2014

DIN 960

unit: mm

d	Pitch P	b			ds			k				s		
		L ≤ 125	125 < L ≤ 200	L > 200	max	min		A		B		max	min	
						A	B	max	min	max	min		A	B
M8	1	22	28	41	8	7.78	7.64	5.45	5.15	5.54	5.06	13	12.73	12.57
M10	1/1.25	26	32	45	10	9.78	9.64	6.58	6.22	6.69	6.11	17	16.73	16.57
M12	1.25/1.5	30	36	49	12	11.73	11.57	7.68	7.32	7.79	7.21	19	18.67	18.48
M14	1.5	34	40	53	14	13.73	13.57	8.98	8.62	9.09	8.51	22	21.67	21.16
M16	1.5	38	44	57	16	15.73	15.57	10.18	9.82	10.29	9.71	24	23.67	23.16
M18	1.5/2	42	48	61	18	17.73	17.57	11.72	11.28	11.85	11.15	27	26.67	26.16
M20	1.5/2	46	52	65	20	19.67	19.48	12.72	12.28	12.85	12.15	30	29.67	29.16
M22	1.5/2	50	56	69	22	21.67	21.48	14.22	13.78	14.35	13.65	32	31.61	31
M24	1.5/2	54	60	73	24	23.67	23.48	15.22	14.78	15.35	14.65	36	35.38	35
M27	2	60	66	79	27	26.48	/	/	/	17.35	16.65	41	40	/
M30	2	66	72	85	30	29.48	/	/	/	19.12	18.28	46	45	/
M33	2	72	78	91	33	32.38	/	/	/	21.42	20.58	50	49	/
M36	3	78	84	97	36	35.38	/	/	/	22.92	22.08	55	53.8	/
M39	3	84	90	103	39	38.38	/	/	/	25.42	24.58	60	58.8	/
M42	3	90	96	109	42	41.38	/	/	/	26.42	25.58	65	63.1	/
M45	3	98	102	115	45	44.38	/	/	/	28.42	27.58	70	68.1	/
M48	3	102	108	121	48	47.38	/	/	/	30.42	29.58	75	73.1	/
M52	3	/	116	129	52	51.28	/	/	/	33.5	32.5	80	78.1	/
M56	4	/	124	137	56	55.26	/	/	/	35.5	34.5	85	82.8	/
M60	4	/	132	145	60	59.26	/	/	/	38.5	37.5	90	87.8	/
M64	4	/	140	153	64	63.26	/	/	/	40.5	39.5	95	92.8	/

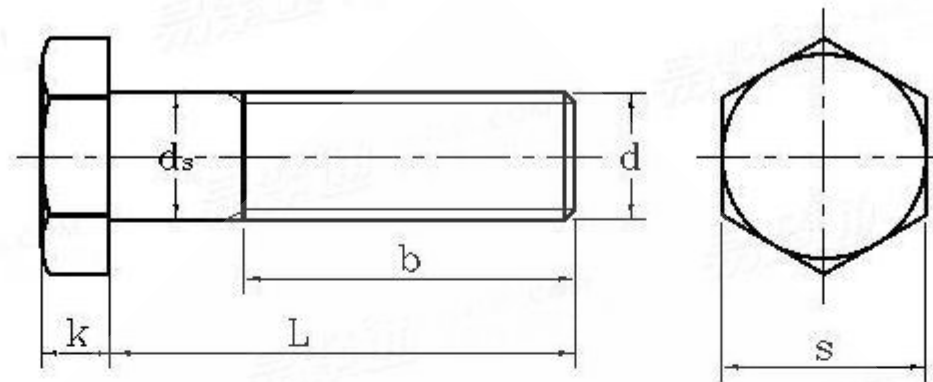


DIN961

Unit: mm

d	P	k				s		
		A		B		max	min	
		max	min	max	min		A	B
M8	1	5.45	5.15	5.54	5.06	13	12.73	12.57
M10	1/1.25	6.58	6.22	6.69	6.11	17	16.73	16.57
M12	1.25/1.5	7.68	7.32	7.79	7.21	19	18.67	18.48
M14	1.5	8.98	8.62	9.09	8.51	22	21.67	21.16
M16	1.5	10.18	9.82	10.29	9.71	24	23.67	23.16
M18	1.5/2	11.72	11.28	11.85	11.15	27	26.67	26.16
M20	1.5/2	12.72	12.28	12.85	12.15	30	29.67	29.16
M22	1.5/2	14.22	13.78	14.35	13.65	32	31.61	31
M24	1.5/2	15.22	14.78	15.35	14.65	36	35.38	35
M27	2	0.8	0.2	17.35	16.65	41	40	
M30	2	0.8	0.2	19.12	18.28	46	45	
M33	2	0.8	0.2	21.42	20.58	50	49	
M36	3	0.8	0.2	22.92	22.08	55	53.8	
M39	3	1	0.3	25.42	24.58	60	58.8	
M42	3	1	0.3	26.42	25.58	65	63.1	
M45	3	1	0.3	28.42	27.58	70	68.1	
M48	3	1	0.3	30.42	29.58	75	73.1	
M52	3	1	0.3	33.5	32.5	80	78.1	

IFI 149



Unit: inch

d	d _s		k		s	
	max	min	max	min	max	min
3-1/4	3.2500	3.2100	2.126	1.988	5.0000	4.838
3-1/2	3.5000	3.4610	2.256	2.120	5.3750	5.200
3-3/4	3.7500	3.7109	2.447	3.303	5.7500	5.562
4	4.0000	3.9609	2.576	2.424	6.1250	5.925
4-1/4	4.2500	4.2228	2.768	2.608	6.5000	6.288
4-1/2	4.5000	4.4727	2.896	2.728	6.8750	6.650
4-3/4	4.7500	4.7227	3.088	2.912	7.2500	7.012
5	5.0000	4.9726	3.217	3.033	7.6250	7.375
5-1/4	5.2500	5.2226	3.408	3.216	8.0000	7.738
5-1/2	5.5000	5.4726	3.538	3.338	8.3750	8.100
5-3/4	5.7500	5.7225	3.729	3.521	8.7500	8.462
6	6.0000	5.9725	3.858	3.642	9.1250	8.825

ISO8676

Screw Thread d			M8	M10	M10	M12	M12	M14	M16	M18	M20	M20	M22	M24
P	Pitch		1	1.25	1	1.5	1.25	1.5	1.5	1.5	2	1.5	1.5	2
k	Grade A	max	5.45	6.58	6.58	7.68	7.68	8.98	10.18	11.715	12.715	12.715	14.215	15.215
		min	5.15	6.22	6.22	7.32	7.32	8.62	9.82	11.285	12.285	12.285	13.785	14.785
	Grade B	max	5.54	6.69	6.69	7.79	7.79	9.09	10.29	11.85	12.85	12.85	14.35	15.35
		min	5.06	6.11	6.11	7.21	7.21	8.51	9.71	11.15	12.15	12.15	13.65	14.65
s	max		13	16	16	18	18	21	24	27	30	30	34	36
	Grade A min		12.73	15.73	15.73	17.73	17.73	20.67	23.67	26.67	29.67	29.67	33.38	35.38
	Grade B min		12.57	15.57	15.57	17.57	17.57	20.16	23.16	26.16	29.16	29.16	33	35

Screw Thread d			M27	M30	M33	M36	M39	M42	M45	M48	M52	M56	M60	M64
P	Pitch		2	2	2	3	3	3	3	3	4	4	4	4
k	Grade A	max	-	-	-	-	-	-	-	-	-	-	-	-
		min	-	-	-	-	-	-	-	-	-	-	-	-
	Grade B	max	17.35	19.12	21.42	22.92	25.42	26.42	28.42	30.42	33.5	35.5	38.5	40.5
		min	16.65	18.28	20.58	22.08	24.58	25.58	27.58	29.58	32.5	34.5	37.5	39.5
s	max		41	46	50	55	60	65	70	75	80	85	90	95
	Grade A min		-	-	-	-	-	-	-	-	-	-	-	-
	Grade B min		40	45	49	53.8	58.8	63.1	68.1	73.1	78.1	82.8	87.8	92.8

DIN 961 - 1990

DIN EN ISO 8676 - 2011

ISO 8765

Screw Thread d		M8	M10	M10	M12	M12	M14	M16	M18	M20	M20	M22	M24	
P	Pitch	1	1.25	1	1.5	1.25	1.5	1.5	1.5	2	1.5	1.5	2	
	L ≤ 125	22	26	26	30	30	34	38	42	46	46	50	54	
b	125 < L ≤ 200	28	32	32	36	36	40	44	48	52	52	56	60	
	L > 200	41	45	45	49	49	53	57	61	65	65	69	73	
d_s	max	8	10	10	12	12	14	16	18	20	20	22	24	
	Grade A min	7.78	9.78	9.78	11.73	11.73	13.73	15.73	17.73	19.67	19.67	21.67	23.67	
	Grade B min	7.64	9.64	9.64	11.57	11.57	13.54	15.57	17.57	19.48	19.48	21.48	23.48	
k	Grade A	max	5.45	6.58	6.58	7.68	7.68	8.98	10.18	11.715	12.715	12.715	14.22	15.215
		min	5.15	6.22	6.22	7.32	7.32	8.62	9.82	11.285	12.285	12.285	13.78	14.785
	Grade B	max	5.54	6.69	6.69	7.79	7.79	9.09	10.29	11.85	12.85	12.85	14.35	15.35
		min	5.06	6.11	6.11	7.21	7.21	8.51	9.71	11.15	12.15	12.15	13.65	14.65
s	max	13	16	16	18	18	21	24	27	30	30	34	36	
	Grade A min	12.73	15.73	15.73	17.73	17.73	20.67	23.67	26.67	29.67	29.67	33.38	35.38	
	Grade B min	12.57	15.57	15.57	17.57	17.57	20.16	23.16	26.16	29.16	29.16	33	35	

Screw Thread d		M27	M30	M33	M36	M39	M42	M45	M48	M52	M56	M60	M64	
P	Pitch	2	2	2	3	3	3	3	3	3	4	4	4	
	b	L ≤ 125	60	66	-	-	-	-	-	-	-	-	-	-
		125 < L ≤ 200	66	72	78	84	90	96	102	108	116	-	-	-
	L > 200	79	85	91	97	103	109	115	121	129	137	145	153	
d_s	max		27	30	33	36	39	42	45	48	52	56	60	64
	Grade A min		-	-	-	-	-	-	-	-	-	-	-	-
	Grade B min		26.48	29.48	32.38	35.38	38.38	41.38	44.38	47.38	51.26	55.26	59.26	63.26
k	Grade A	max	-	-	-	-	-	-	-	-	-	-	-	-
		min	-	-	-	-	-	-	-	-	-	-	-	-
	Grade B	max	17.35	19.12	21.42	22.92	25.42	26.42	28.42	30.42	33.5	35.5	38.5	40.5
		min	16.65	18.28	20.58	22.08	24.58	25.58	27.58	29.58	32.5	34.5	37.5	39.5
s	max		41	46	50	55	60	65	70	75	80	85	90	95
	Grade A min		-	-	-	-	-	-	-	-	-	-	-	-
	Grade B min		40	45	49	53.8	58.8	63.1	68.1	73.1	78.1	82.8	87.8	92.8

DIN 960 - 1990

DIN EN ISO 8765 - 2011